



www.tulsafsc.com

# THE INSIDE EDGE



July/  
August 2008

## Board of Governors

Jennifer DeAngelis  
 Mark DeAngelis  
 Heidi Fain  
 Wendy Lissau  
 Amie Jonckowski  
 John Martens  
 Mary Anne McGivern  
 Tammy Palmer  
 Renee Schmucker  
 Robbin Sipes  
 Kevin Slane  
 Diane Wood

### Officers

#### President

Jennifer DeAngelis  
[jennifer@tulsafsc.com](mailto:jennifer@tulsafsc.com)

#### Vice-President

Mary Anne McGivern  
[MaryAnne@tulsafsc.com](mailto:MaryAnne@tulsafsc.com)

#### Secretary

Heidi Fain  
[Heidi@tulsafsc.com](mailto:Heidi@tulsafsc.com)

#### Treasurer

John Martens  
[John@tulsafsc.com](mailto:John@tulsafsc.com)

### Committee Chairmen

#### Membership

Mark DeAngelis  
[Mark@tulsafsc.com](mailto:Mark@tulsafsc.com)

#### Competition

Jennifer DeAngelis  
[jennifer@tulsafsc.com](mailto:jennifer@tulsafsc.com)

#### Test-Singles & Pairs

Heidi Fain  
[Heidi@tulsafsc.com](mailto:Heidi@tulsafsc.com)

#### Test-Dance

Mary Anne McGivern  
[MaryAnne@tulsafsc.com](mailto:MaryAnne@tulsafsc.com)

#### Fundraising

Tammy Palmer  
[Tammy@tulsafsc.com](mailto:Tammy@tulsafsc.com)

#### Community Development

Diane Wood  
[Diane@tulsafsc.com](mailto:Diane@tulsafsc.com)

#### Social

Renee Schmucker  
[Renee@tulsafsc.com](mailto:Renee@tulsafsc.com)

#### Education, Training & Professional Dev.

Robbin Sipes  
[Robbin@tulsafsc.com](mailto:Robbin@tulsafsc.com)  
 Amie Jonckowski  
[amie@tulsafsc.com](mailto:amie@tulsafsc.com)

#### Platinum Jubilee

Wendy Lissau  
[Wendy@tulsafsc.com](mailto:Wendy@tulsafsc.com)

#### Webmaster

Kevin A. Slane  
[webmaster@tulsafsc.com](mailto:webmaster@tulsafsc.com)

#### Inside Edge Editor

Judy Banner  
[Judy@tulsafsc.com](mailto:Judy@tulsafsc.com)

## President's Message

July 1, 2008 marks the beginning of the 2008-2009 membership year for the Tulsa Figure Skating Club. Our Club consists of over 200 members and continues to grow. To give you perspective, our membership exceeds the combined membership of both clubs in Oklahoma City. This year Tulsa FSC plans to serve our membership with increased programs and seeks your input along the way. Mark DeAngelis is the membership chair and will be happy to answer membership questions.

We already brought to you outstanding seminars with Anne Barr and Scott Brown. The members who attended were appreciative of the newfound knowledge and the club was thrilled to bring these opportunities to the skaters. We will be announcing other seminars in the near future. Tulsa FSC Education Chairmen are Aimee Jankowski and Robbin Sipes. Please feel free to contact them and offer assistance and ideas. Your input is vital to the success of future programs.

In the fall, look for more information on the Bridge Program. This program is designed to help skaters transition from Basic Skills to higher skating levels. Skaters and their parents will have an opportunity to meet coaches, learn the value of private lessons, the ins and outs of competitions, plus much more.

Club Ice will start once again in September. There will be parties and informational sessions for skaters and parents. Tulsa FSC hopes to host the Sooner State Games again this year and will keep you posted on this and other competitions and shows. Tulsa FSC also hosts test sessions to give skaters an opportunity to advance in the sport. Heidi Fain does a great job of organizing these sessions and obtaining officials. Heidi and the other board and committee members are all volunteers. Tulsa FSC could not exist without the giving spirit of these members.

The Tulsa Figure Skating Club subsidizes these programs. Your dues money enables the club to provide opportunities to benefit the skaters. Additionally, many skaters have learned the benefits of asking community businesses to sponsor the club. The skater benefits and the funds dedicated to the club help fund seminars and programs for the skaters. It is easy to do and I am available to answer questions on this growing program. The sponsors you see listed in this newsletter were obtained by skaters. There is no magic, you just have to be willing to ask. I think you will be surprised at

how many businesses are looking for youth causes to support and would be eager to help your skater and the Tulsa Figure Skating Club.

Many thanks to Judy Banner who resigned her board position. Judy has worked tirelessly on the newsletter, fundraising, and sponsors. The newsletter has been a resource not only for our club members but for other clubs and skaters to learn of our programs and competitions. Many thanks to Judy for her hard work and dedication. Tammy Palmer has been appointed to the board and will work on fundraising. Wendy Lissau will be responsible for the newsletter starting in September.

As with any organization, we need volunteers. One of our goals for this year is to get more people involved in the club. We need your help and your ideas and we welcome your input. I look forward to hearing from you and on behalf of the Board, please know that we appreciate your membership and dedication to figure skating and the Tulsa FSC. We look forward to another successful year.



Jennifer DeAngelis  
 President, TFSC

## Inside This Issue

President Comments	1
Honor Roll Students	2
Member Spotlight	3
Renewing Sponsors	3
Competition Reports	4
<i>Spring Fling</i>	
<i>Wichita Mid-Continent</i>	
Club News & Events	5
<i>Skating Seminars</i>	
<i>Committee Reports</i>	
<i>Local Laurels</i>	
<i>New Members</i>	
<i>Upcoming Events</i>	
Calendar of Events	8
Sponsor Listings	9

# Tulsa Figure Skating Club Honor Roll Students



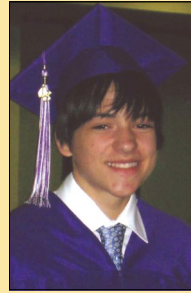
**Hope Abernathy**  
10th Grade  
Bob Jones Homeschool  
Curriculum  
4.0 GPA



**Megan Banner**  
7th grade  
Advanced Academics  
Homeschool Curriculum  
4.0 GPA



**Jessica Barber**  
6th Grade  
Thoreau Demonstration  
Academy  
4.0 GPA



**Stephen Brower**  
8th Grade  
Carver Middle School  
4.0 GPA



**Olivia Bury**  
3rd Grade  
Santa Rose Elementary  
Claremore  
4.0 GPA



**Katherine DeAngelis**  
4th Grade  
School of St. Mary  
4.0 GPA



**Abby Fain**  
4th Grade  
Liberty Elementary  
Honor Roll



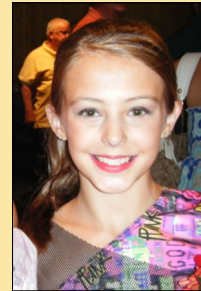
**Michelle Han**  
6th Grade  
Cascia Hall  
4.0 GPA



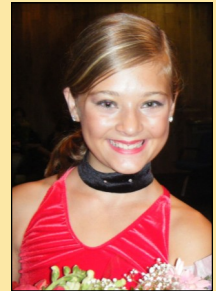
**Nicole Han**  
4th Grade  
Monte Casino  
4.0 GPA



**Nancy Jackson**  
Tulsa Community  
College  
4.0 GPA



**Madison Keitges**  
4th Grade  
Bailey Elementary  
Owasso  
4.0 GPA



**Payton Keitges**  
6th Grade  
Owasso  
4.0 GPA



**Madeleine Marshall**  
8th Grade  
Cascia Hall  
4.0 GPA



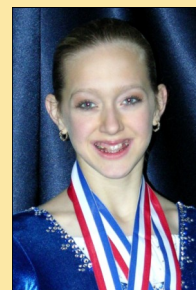
**Brooke Rogers**  
5th Grade  
Moore Elementary  
4.0 GPA



**Alexadria Sipes**  
8th Grade  
Cascia Hall  
Silver Honor Roll



**Brittany Schmucker**  
9th Grade  
Cascia Hall  
4.0 GPA



**Bethany Shinn**  
9th Grade  
Glendale High School  
Springfield  
4.0 GPA



**R.J. Straw**  
5th Grade  
Oklahoma Union School  
A & B Honor Roll



**Paige Wheeler**  
11th Grade  
Cascia Hall  
Silver Honor Roll



**Claire Wood**  
8th Grade  
Casacia Hall  
Silver Honor Roll

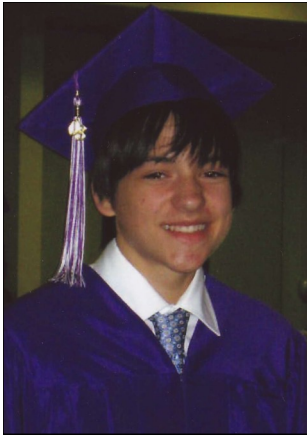
**NOT PICTURED**

**Lara Barney**  
Edison middle school  
7th grade

**The Tulsa Figure  
Skating Club  
congratulates you  
all on your academic  
success.**



## Club Members in the Spotlight



**Stephen Brower** graduated from Carver Middle School with a 4.0 GPA. He received the President's Education Award for outstanding academic success and served as an officer in National Junior Honor Society. Stephen was a member of the Carver Middle School championship academic bowl team.



**Nancy Jackson** graduated from Tulsa Community College with an Associates Degree in Liberal Arts. She made the Deans Honor Roll for the spring semester.



**Payton Keitges** completed 6th grade in Owasso with a straight A average. She was selected as an Outstanding Youth for her academic and leadership accomplishments!



**Brittany Schmucker** is one of 7 Cascia Hall Freshmen to receive the Medallion of Achievement award. This award is based on grades, attitude, and community service. Brittany was also recognized for outstanding achievement in Spanish, U.S. History, Mathematics, Theology, and English. She also recently participated in the school's spring musical, "Grease."

**Congratulations on your achievements!**

**Many Thanks To The Following Sponsors Who Have Renewed Their Sponsorships For The 2008-2009 Skating Year!**

*Silver Level*



*Bronze Level*



**Donna Tomlinson**

# Spring Spectacular

May 17, 2008

Hosted by the Oilers Ice Center

Skater's name	Freestyle	Spins	Jumps	Compulsories	Dance	Artistic
Claire Lofgren	1st			1st		
Faith Bilbruck	1st			1st		
Laurene Smith	4th			2nd		
Mia Provenzano	1st			1st		
Emily Enterline	2nd			3rd		
Katie Smith	1st			4th		
Madison Keitges	2nd	1st	1st			
Jessica Barber				2nd		3rd
Katelyn Karnuth	5th	2nd	2nd	1st		
Elizabeth Robinson	6th	2nd		3rd		
Madeleine Marshall	3rd	2nd	1st	2nd		1st
Lillian Swearingen	1st			1st		1st
Olivia Bury	3rd			1st		
Peyton Lissau	1st			1st		2nd
Hope Kelley	2nd	4th	3rd	2nd		
Katelyn Cashion	1st			1st		
Madison Jensen	6th	2nd	1st	2nd		
Lauren Hendrickson	3rd	1st	4th	3rd		
Killian Kane	2nd					
Payton Keitges	1st	1st		1st		
Hailey Dugan	3rd			2nd		
Allison Lofgren	2nd			3rd		
Jordan Jonckowski	1st					
Lara Barney	2nd					
Olivia Edwardes						2nd
R J Straw		3rd	2nd			3rd
Garrett Jensen					1st	
Brooklyn Branch	2nd			1st		
Kelsey Bedore	3rd		2nd			
Tiara Smith	4th			1st		
Jennifer Fox	1st			3rd		
Mary Joyce	4th		4th	4th		





# Wichita Mid-Continent

June 13 - 15, 2008 Wichita, KS

### Basic Level 8 Elements Program - Final Standings

Skaters in Event = 4  
3 Emily Enterline

### Basic Level 8 Free Skate - Final Standings

Skaters in Event = 5  
1 Emily Enterline

### Freeskate 4 Compulsory Moves - Final Standings

Skaters in Event = 4  
3 Hailey Dugan

### Freeskate 4 Free Skate - Final Standings

Skaters in Event = 5  
4 Hailey Dugan

### Intermediate Jumps - Final Standings

Skaters in Event = 3  
3 Danika Burton

### Intermediate Spins - Final Standings

Skaters in Event = 3  
3 Danika Burton

**Anne Barr instructed club members on the IJS judging system during a May seminar and Scott Brown gave a seminar on choreography in June. Both seminars were well attended and thoroughly enjoyed by club members**



*Anne Barr Seminar With Will Smith*



*Scott Brown Seminar*



## Club News & Events

### Membership News

Your 2007-2008 Membership with the Tulsa Figure Skating Club and United States Figure Skating Association expired on June 30th. Please remember to turn in your 2008-2009 Membership forms as soon as possible. You are not eligible to skate at any USFS sanctioned event unless your membership is up to date. This rule effects any Test or Competition that you may be planning to go to after July 1st. Membership packets were sent to all members on June 18th. Due to possible changes to the membership categories, the mailing was delayed about 3 weeks over previous years to make sure that the information being sent was going to be correct. My apologies for the delay. Although membership renewal was due on July 1st, because of the delay the late fee will be waived during the month of July. Please do not wait until the last minute to send in the forms. Mail time and processing time needs to be considered when planning for a competition. If the form is in the mail when you go to a competition and we haven't had time to process it, you may be denied access to the ice by the host club at the competition. If you have misplaced the forms that were mailed to you, forms have been placed on the club board at the entrance to the Rink. **Important: Mail your forms in to the club. The P.O. Box address is on the forms or make arrangements to hand it to me personally. Do Not hand your forms to anyone else, including a Coach or Board Member. If they do not get it to me you will not be renewed.** Unfortunately this has happened in the past. If you have any questions please contact Mark DeAngelis, Membership Chair, at 918-808-8022.



Mark DeAngelis  
Membership  
Chair

### THE IMPORTANCE OF OUR NON-SKATING MEMBERS

All parents who have children under the age of 14 know that the Tulsa FSC requires that a parent sign up as a Non-Skating Member (AKA Social Member). Most Clubs have this requirement and one of the main reasons is safety. Younger skaters may not understand the rules so a parent is required to sign up with the club to assist young skaters as they grow and develop in the sport. This helps make our program a safer program for all involved.

Membership fees help the club financially by providing us with additional funds to support our skaters. This support helps us to provide funds for seminars, purchase additional ice time, and more. The more members we have the more representatives we get to send to the USFS annual Governing Council Meeting. This allows the Tulsa FSC to have a bigger voice in U.S. Figure Skating.

There are several families in the club who have more than one parent as club members. Some have brothers, sisters, and even Grandparents signed up as social members. Please know that social members are a valuable part of our club and we thank you for being a member. I would ask that those of you who have only one parent as a required member or those who think your membership is no longer necessary to reconsider. Your membership will support our Skaters in ways that you never thought possible.

### NEW MEMBERS JOIN TULSA FSC

Since the beginning of the 2008-09 Skating Season on July 1st, TFSC has signed up 119 Club Members. We welcome back those members from last year and extend a special welcome to our 6 new members. Josiah Curley, Megan Potts and Aleah Tinker are the clubs newest Skating members. Megan and Aleah are local skaters and Josiah is coming to us from the Monroe FSC in Monroe Michigan. Three parents have signed up as new Non-Skating members. We welcome Kathleen Curley, Russell Palmer, and Kathy Tinker to the TFSC family.

### Welcome New Members!

Josiah Curley  
Russell Palmer  
Aleah Tinker

Kathleen Curley  
Meagan Potts  
Kathy Tinker

## Club News & Events

### Help Bridge the Past and Future of the TFSC!

In recognition of the TFSC's 70<sup>th</sup> anniversary, a Reunion Celebration is being planned for early winter. We are currently seeking contact information for past members of the TFSC to invite them to attend and we need your help! If you have contact information for past members, or have ideas on how we can obtain this information (past coaches, skaters, etc), please call or email Wendy Lissau at 296.3236 or [wendy@tulsafsc.com](mailto:wendy@tulsafsc.com). Even if it's only a name or two, your help is important to begin building this unprecedented database of past and present members.

### From The Editor

Dear Tulsa Figure Skating Club Members,

It is with mixed emotions that I resign as Editor of the TFSC Newsletter, *The Inside Edge*. The Board decided to resurrect the newsletter a year and a half ago. Since then it has become a great informational source and serves to document the history of our Club as we move through our platinum year and into the future. I have truly enjoyed putting together each issue. However, Increasing demands on my time require me to step down. This will be my last issue as Editor. I will pass the Editor position on to the very capable hands of Wendy Lissau. Please support Wendy and submit news and information to her for future issues.

Sincerely,  
Judy Banner

## Local Laurels

Heidi Fain, Test Chair



### Tests Passed June & July 2008

#### Junior Moves

Megan Banner  
East McMillan

#### Intermediate Moves

Taylor Jonckowski  
Chelsea Jones  
Bailey Slane  
Cory Tate-Sullivan

#### Juvenile Moves

Kayla Castleberry  
Joseph Wilson

#### Preliminary Moves

Garrett Jensen  
Jordan Jonckowski  
Kaitlyn Palmer  
Brooke Rogers

#### Pre-Preliminary Moves

Lara Barney  
Meagan Potts

#### Intermediate Freeskate

East McMillan

#### Juvenile Freeskate

Kayla Castleberry

#### Preliminary Freeskate

Brooke Rogers

#### Pre-Preliminary Freeskate

Jordan Jonckowski  
Meagan Potts

#### Solo Dutch Waltz

Abigail Fain

#### Dutch Waltz

Katherine DeAngelis

#### Canasta Tango

Katherine DeAngelis  
Abigail Fain  
Garrett Jensen

#### Solo Canasta Tango

Abigail Fain

#### Rhythm Blues

Katherine DeAngelis  
Abigail Fain  
Garrett Jensen

#### Solo Rhythm Blues

Abigail Fain

#### Hickory Hoedown

Joseph Wilson  
Claire Wood

#### Willow Waltz

Charles Meadows  
Joseph Wilson  
Claire Wood

#### Ten Fox

Charles Meadows  
Joseph Wilson  
Claire Wood

#### Fourteen Step

Charles Meadows

#### European Waltz

Charles Meadows  
Brittany Schmucker

#### Solo Rocker Foxtrot

Brittany Schmucker

#### Argentine Tango

Kim Berry-Borgos

#### Quickstep

Kim Berry-Borgos

### Next Test Session

August 26th, 5:45-8:15 p.m. at Oilers  
(last session for Regionals)



## Visit The TFSC Online Store

Log onto the TFSC website  
[www.tulsafsc.com](http://www.tulsafsc.com) and click the  
 "online store" link

For more news and competition information visit our website at [www.tulsafsc.com](http://www.tulsafsc.com)  
 Click **Club Info**.  
 Click on **newsletter** to download a copy of this publication.

## Club Jackets



We offer two different club jacket designs. At left is a wind suit type jacket. Bottom right is a lighter weight and more fitted design. Both jackets are personalized with the skater's name. Matching pants are available with either design. They are custom jackets so measurements are required. Orders can be taken at any time. The jackets are made by different companies. If you are interested in ordering the wind suit type jacket (top left) contact *Kathy Gibson* at [Kathy@tulsafsc.com](mailto:Kathy@tulsafsc.com). For the fitted type jacket, contact *Tammy Palmer* at [Tammy@tulsafsc.com](mailto:Tammy@tulsafsc.com).



## Editorial note

Please email any pictures or newsletter content to Wendy Lissau at [Wendy@tulsafsc.com](mailto:Wendy@tulsafsc.com) for consideration for the September/October newsletter.

**Deadline for submission is September 1st.**

## Mark Your Calendars

July 23-26	<b>Skate Detroit</b>	Detroit, MI ( <i>Detroit FSC</i> )
July 30 - Aug 2	<b>Lake Placid Dance Competition</b>	Lake Placid, NY
August 1-3	<b>Heart of America Invitational</b>	Overland Park, KS ( <i>Silverblades FSC</i> )
August 6-10	<b>Colorado Championship</b>	Arvada, CO ( <i>Mile High FSA</i> )
August 6-10	<b>National Showcase</b>	Rochester, MN ( <i>Rochester FSC</i> )
August 14-17	<b>Dupage Open</b>	Dupage, IL ( <i>Dupage FSC</i> )
August 17	<b>Arctic Edge Open Basic Skills</b>	Arctic Edge Arena, Edmond, OK
<b>August 26th</b>	<b>Test Session</b>	<b>5:45-8:15 p.m. Oilers Ice Center</b>
Aug 29 - Sep 1	<b>Houston Fall Invitational</b>	Sugarland, TX ( <i>Houston FSC</i> )
Sept. 19-21	<b>Pony Express Championships</b>	St. Joseph, MO ( <i>St. Joseph FSC</i> )
October 10-14	<b>Southwestern Regional's</b>	Colorado Springs, CO ( <i>Broadmoor FSC</i> )
Nov. 14 (tentative)	<b>Blazing Blades Basic Skills</b>	Oklahoma City, OK ( <i>Blazers Ice Center</i> )
Nov. 11-15	<b>Midwestern Sectional Championship</b>	Houston, TX ( <i>TX Gulf Coast FSC</i> )
Dec. 8-13	<b>Junior National Championship</b>	
January 18-25, 2009	<b>2009 State Farm USFS Championship</b>	Cleveland, OH



# We Thank Our Sponsors

Platinum



**TOO MUCH FUN KEY WEST.com**  
 Vacation Planning  
 accommodations, fishing charters & island activities  
 K. Anne O'Shea (631) 413-2150  
 TooMuchFunKW@aol.com  
 P.O. Box 4450 Key West, Florida 33041

Gold



Silver

**ETHAN ALLEN**  
  
 Jan McKay  
 Interior Designer  
 6006 S Sheridan  
 Tulsa, Oklahoma 74145-9212  
 918 498 5073  
 In Showroom Wednesday-Saturday

**Frontier**  
 Energy Services, LLC

*American Microscope Co.*  
 Microscope Sales & Service  
 Surgical & Laboratory  
 New & Used  
**BOB GUEVARA**

*Johnny*  
**Carino's**  
 ITALIAN

Senior Star Living®  
 Woodland Terrace Burgundy Place

Bronze

**FREESE**  
 ARCHITECTURE

Tulsa  
**Bone & Joint**  
 Associates

Honey Baked Ham

Gary Fisher DDS PC  
 Pediatric Dentistry

**WACHOVIA**  
 Neal Sperry

Summit Financial Group

Donna Tomlinson

STATE FARM  
 INSURANCE

CELEBRATING  
**50** years  
 MISS HELEN'S  
 PRIVATE SCHOOL

SUMMIT BANK

**QGROUP, INC.**

Mark D. Welty

Conrad C. Casler, Jr., D.D.S.  
 AMC Building  
 6911 South 60th East Avenue  
 Suite 300  
 Tulsa, Oklahoma 74133-1748

**OILERS**  
 2004-2005

**chsner**  
 chiropractic  
 Centre

**PARKER**  
 & ASSOCIATES | REALTORS  
 Robin Gentzen-Parker, ABR  
 918-740-2299  
 Email: rgentzen@cov.net